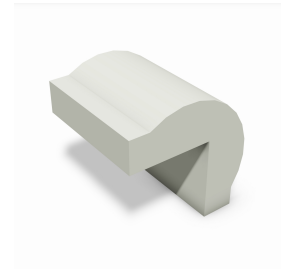


REVIT CONTENT GUIDE

Manufacturer:	Wiremold
File:	Elbow-5500_Series-Wiremold-External.rfa
Type Catalog:	Not Applicable
Rendering file:	Not Applicable
Schedule file:	Schedule - Raceway-5500.rvt



Instance Properties

Dimension	
Depth*	6.900
Height*	6.900
Width*	6.688
Graphics	
Has Pathway Decoration*	<input checked="" type="checkbox"/>
Invert Power and Communication*	<input type="checkbox"/>
Identity Data	
Equipment Number*	
Part Description*	Bend Radius Control Full Capacity External Elbow, Ivory
Part Number*	5518FO

Type Properties

The family contains the following 4 types:

- Standard, Ivory (Values for this type are shown below)
- Fiber Ready, Ivory
- Fiber Ready, White
- Standard, White

Constraints	
Default Elevation	48.000
Identity Data	
Copyright*	Copyright © Wiremold
Date Created*	July 7, 2016
Date Modified*	July 7, 2016
Description*	See Part Description
Equipment Abbreviation*	RW
Family Version*	1.0
Manufacturer*	Wiremold
Model*	See Part Number
Model Disclaimer*	For More Information, Contact Wiremold
Product Documentation Link*	http://www.legrand.us/~media/products/resources/wiremold-products/raceway/nonmetallic-raceway/three-channel-raceway/5500-large-capacity-raceway/ed365r16.aspx
Product Page URL*	http://www.legrand.us/wiremold/raceway/nonmetallic-raceway/multi-channel-raceway/5500-large-capacity-raceway/5518fo-bend-radius-full-capacity-external-elbow.aspx

Identity Data	
	#.V4AVjKljo8A
Type Image	-1
URL*	http://www.legrand.us/wiremold.aspx
Ifc	
ClassificationCode*	
ClassificationCode(10)*	
ClassificationCode(2)*	
ClassificationCode(3)*	
ClassificationCode(4)*	
ClassificationCode(5)*	
ClassificationCode(6)*	
ClassificationCode(7)*	
ClassificationCode(8)*	
ClassificationCode(9)*	
IfcApplicableOccurrence*	
IfcDescription*	
IfcElementType*	
IfcExportAs*	
IfcExportType*	
IfcName*	
IfcTag*	
Materials	
Product Material*	4940

Half tone text in the property tables indicates that the value is locked from editing.

*Indicates Shared Parameter and can be scheduled

Loading and Placing into the Project

One "Electrical Fixtures" family is supplied and can be loaded into a Revit project through all traditional methods. The elbow requires a work-plane host to be placed within the project (i.e. wall). Also, ensure that the visibility settings within the project are modified to have the Electrical Fixtures category visible.

For ease of use, all raceway should be placed in a 3D or appropriate elevation view. When placing the elbow into a project it must be placed on any flat wall next to a piece of existing 5500 raceway. There is a strong reference on either side of the connector to allow the user to place the family with ease.

Project Behavior

Within the type and instance properties dialogues, the user will find useful information for scheduling purposes such as Height, Width, Depth and other unique properties of the model. In "Identity Data" the user will find information specific to Wiremold and the model, i.e.: family revision information, Wiremold copyright information, part description, product URL and other specific data. *See scheduling description below.

The raceway uses power and communication line work or 'Pathway Decoration' in order to designate a channel as being used for power or communication. The power and communication designation can be switched by selecting the 'Invert Power and Communication' parameter.

Instance Parameter

In the "Instance Parameters", the user has the following options to modify:

- Equipment Number – For tagging each placed instance.
- Invert Power and Communication – For switching the power and communication designation.
- Has Pathway Decoration – For toggling the visibility of the power/communication line work.

Type Parameter

Each type represents a manufactured product. Therefore, the type parameters should not be modified by the user for standard configuration. Please note:

- Product Page URL – Directs to the manufacturer's online listing of the product.
- Product Documentation Link – Directs to the product's online specification sheet.
- Equipment Abbreviation – This parameter exists for filtering schedules. *See scheduling description below.

Family Version – Lists the current revision number of the family.

Visibility

For best performance, all model geometry is turned off in all views and represented through masking regions and symbolic/model lines that update automatically when a user changes view properties.

Rendering

When the family file is loaded into the project, standard Wiremold materials are imported. These may be modified, though ensure that the modification selection matches an actual manufacturer supplied option.

Schedule Creation

Wiremold products may be scheduled utilizing the schedule view in the given project file. Select and copy (Ctrl-C) the schedule from the sheet view and paste it (Ctrl-V) into a sheet in your project. The schedule filters are set to look for only those units designated with Manufacturer as "Wiremold" and Equipment Abbreviation as "RW". The schedules contain special functionality for displaying the configured order numbers of the selected types.